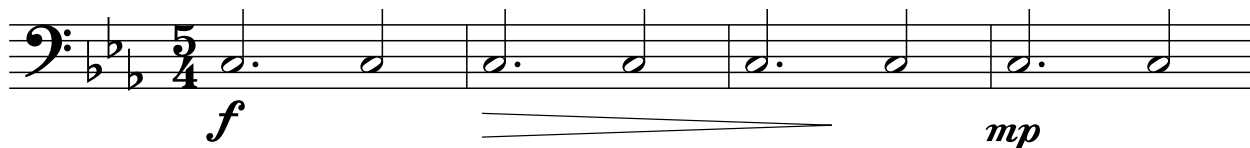


Blues

Dominique Isperian

♩ = 80



5



9

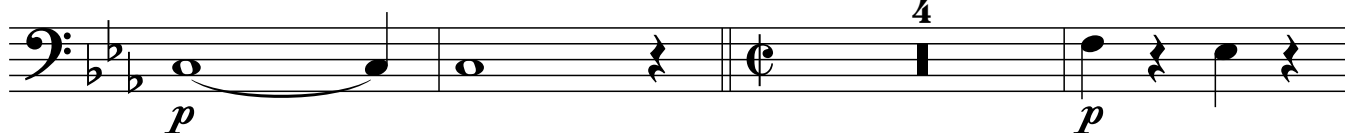


13



14

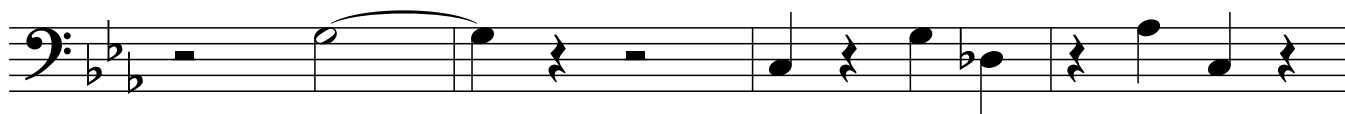
30



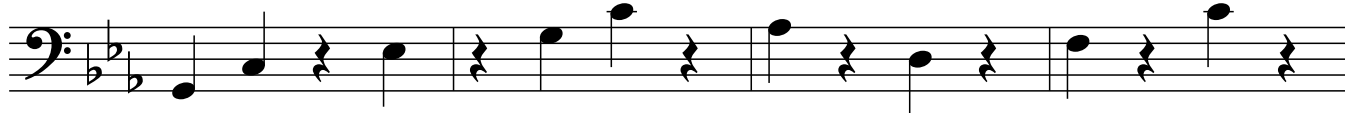
37



44



48



52

[illegible]

56

The bass line of 'The Rose Tree' is written on a single staff with a bass clef. The key signature has two flats (B-flat and E-flat), and the time signature is 3/4. The melody consists of four measures: the first measure has a half note G2 and a quarter rest; the second measure has a half note F2 and a quarter rest; the third measure has a half note E2 and a quarter rest; the fourth measure has a dotted quarter note D2, an eighth note C2, and a quarter rest.

66

The first staff of music is written in bass clef with a key signature of two flats (B-flat and E-flat). It begins with a mezzo-forte (*mf*) dynamic marking. The melody starts on a half note G2, followed by a quarter rest, then a half note A2, a quarter rest, a half note B-flat2, a quarter rest, a half note C3, a quarter rest, a half note D3, a quarter rest, a half note E-flat3, a quarter rest, a half note F3, a quarter rest, a half note G3, a quarter rest, and finally a half note A3.

70

[illegible]

74

Musical notation for the bass line of 'The Rose Tree'. The key signature is one flat (B-flat), and the time signature is 4/4. The notation includes a treble clef, a key signature of one flat, and a time signature of 4/4. The melody consists of several measures, including a measure with a whole note and a measure with a half note. The notation is written on a single staff.

103

The musical notation for the bass staff shows a sequence of notes and rests. It begins with a half note G2, followed by a quarter rest, a half note F#2, a quarter rest, a half note E2, a quarter rest, a half note D2, a quarter rest, a half note C2, a quarter rest, a half note B1, a quarter rest, a half note A1, a quarter rest, a half note G1, and finally a whole note F#1. The key signature has two flats, and the time signature is common time.

107

The bass line of 'The Rose Tree' is written in 3/4 time. It begins with a treble clef and a key signature of one flat (B-flat). The melody starts on a half note G2, followed by a quarter note F2, and then a quarter note E2. A slur covers the next two notes: a quarter note D2 and a half note C2. This is followed by a quarter rest, then a quarter note B1, and a quarter note A1. The piece ends with a quarter rest.

113

The bass line of 'The Rose Tree' is written in 3/4 time on a single staff. It begins with a treble clef and a key signature of one flat (B-flat). The melody consists of a series of eighth and sixteenth notes, with some measures containing triplets and sixteenth-note groups. The final measure of the line is a whole note G4.

120

Musical notation for the bass line of 'The Rose Tree'. The key signature is B-flat major (two flats). The melody consists of the following notes: G2 (half note), A2 (quarter note), B-flat2 (quarter note), A2 (quarter note), G2 (half note), F2 (half note), E2 (half note), D2 (half note), C2 (half note), B-flat2 (quarter note), A2 (quarter note), G2 (half note), F2 (half note), E2 (half note), D2 (half note), C2 (half note). The tempo is marked as 80 beats per minute.

125

[illegible]